

**UX**  
SERIES



**ElectroMech**



## **Electric Rider Stacker**

**MSL15XUX / 1500kg**

# UX Series - Electric Rider Stacker

**MSL15XUX / 1500kg**

The Yale® electric rider stacker MSL15XUX combines both features and reliable performance. This low-maintenance truck can help increase productivity and reduce operational costs.

## Productivity

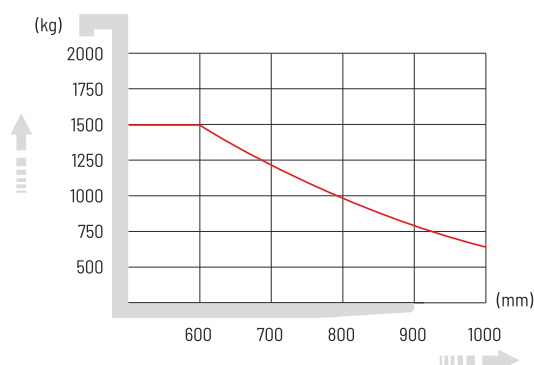
- Maintenance free AC motors
- Multi-function display with BDI and hour meter
- Handle equipped with emergency reversing device
- Auto deceleration function makes operation more productive
- Low speed switch
- Variable speed control
- Sideways battery removal is easy to maintain
- Cushioning for low-noise operation
- Built-in pressure relief valve protects from overloads and increases reliability
- Emergency power disconnect switch
- 240Ah traction battery
- Cold storage configuration (option)
- Narrow leg option for Australian market

## Optimum Structural Design

- Low centre of gravity enhances stability
- Full free lift mast options for low overhead clearance
- Durable plastic covers
- Adjustable balance caster wheel improves stability

## Load Charts

### Load Centre Chart



## Serviceability

- Low voltage protection setting prolongs battery life time
- CANbus technology reduces wiring complexity and increases reliability
- The simple electronic components makes troubleshooting and servicing more efficient
- Hall-effect sensors reduce wear and increase the component life



Handle (Standard)  
(Left & Right Handed)



Adjustable  
Straddle Legs

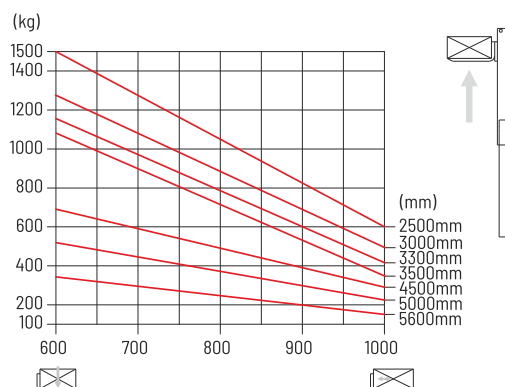


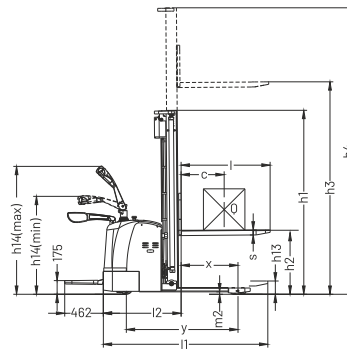
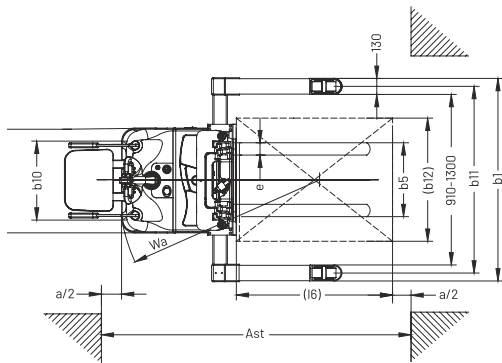
One Sided (Cold Store)



Two Sided (Cold Store)

### Load Capacity Chart





## Specifications and Dimensions

Model	Measurement	MSL15XUX						
Load capacity	Q (kg)	1500						
Load centre distance	c (mm)	600						
Load distance, centre of drive axle to fork	x (mm)	697						
Fork height, lowered	h13 (mm)	70						
Wheelbase	y (mm)	1420						
Axle loading, laden front/rear	Kg	1440/1280						
Axle loading, unladen front/rear	Kg	870/350						
Tyres		polyurethane						
Tyre size, front	mm	Φ 250×70						
Tyre size, rear	mm	Φ 80×84						
Additional wheels (dimensions)	mm	Φ 150×60						
Wheels, number front rear (x=driven wheels)		1x+1/4						
Tread, front	b10 (mm)	520						
Tread, rear	b11 (mm)	1040-1430						
Mast height lowered	h1 (mm)	1805	2055	2205	2305	2120	2280	2480
Free lift	h2 (mm)	0	0	0	0	1570	1740	1940
Max. lift height	h3 (mm)	2590	3090	3390	3590	4590	5090	5690
Mast height extended	h4 (mm)	3025	3525	3825	4025	5080	5560	6160
Height of tiller in drive position min./max.	h14 (mm)	1150/1450						
Overall length	l1 (mm)	2020						
Length to face of forks	l2 (mm)	962						
Overall width	b1 (mm)	1170-1560						
Fork dimensions	s/e/l (mm)	40/100/1070 (1150)						
Width overall forks	b5 (mm)	200-800						
Ground clearance, centre of wheelbase	m2 (mm)	35						
Aisle width for pallets 1000x1200 crossways	Ast (mm)	2560						
Aisle width for pallets 800x1200 lengthways	Ast (mm)	2545						
Turning radius	Wa (mm)	1695						
Steer motor		Mechanical				Electronic		
Drive motor power	kW	1.2				1.5		
Lift motor power	kW	3						
Sound lever at the driver's ear according to DIN12503	dB (A)	70						
Travel speed, laden/unladen	Km/h	6.5/6.7						
Lift speed, laden/unladen	m/s	0.11/0.15						
Lowering speed, laden/unladen	m/s	0.12/0.12						
Max. gradeability, laden/unladen	%	8/15						
Service brake		Electromagnetic						
Battery voltage, nominal capacity K5	V/Ah	24/240						
Battery weight	Kg	220						
Battery dimensions l/w/h	mm	675x254x500						
Service weight (without battery)	Kg	1200/1225/1240/1250/1300/1320/1340						

## MSL15XUX Power Plug Type



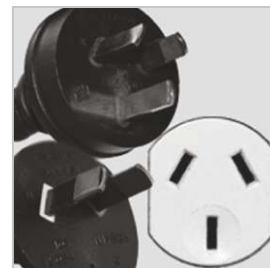
**A**  
Power Plug



**F**  
Power Plug



**G**  
Power Plug



**I**  
Power Plug

## About ElectroMech Lift Trucks

ElectroMech and Hyster-Yale® have entered into an agreement for the sales and service of the Yale® brand of forklifts and lift trucks in India, which is being provided through a dedicated company - ElectroMech Lift Trucks Pvt. Ltd. The ElectroMech Yale association benefits from the leadership position of ElectroMech in the Indian market and its dependable service support. It is further bolstered by the global technologies from Hyster-Yale®.

ElectroMech Lift Trucks Pvt. Ltd. is a 100% subsidiary of its parent company ElectroMech and, with state-of-the-art facilities, is solely dedicated to the lift truck business.



**ElectroMech** **Yale®** 

*Corporate Office & Plant*

### **ElectroMech Lift Trucks Pvt. Ltd.**

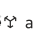
Gat No. 316, At post Kasar Amboli,  
Tal. Mulshi, Dist. Pune 412 115 INDIA  
Telefax : +91-20-6654 2222  
E-mail : [yale@emech.in](mailto:yale@emech.in)

### **Yale Pacific**

1/23 Rowood Road, Prospect NSW 2145  
Tel: +61 (2) 9795 3800 | Fax: +61 (2) 9792 8484  
[yale.com/pacific/en-au](http://yale.com/pacific/en-au)

### **Yale Asia**

16 Tuas Avenue 20, Singapore 638827  
Tel: +65 6863 3387 | Fax: +65 6863 3349  
[yale.com/asia/en-sg](http://yale.com/asia/en-sg)

© 2024 Hyster-Yale Group, Inc., all rights reserved. YALE and **Yale**  are trademarks of Hyster-Yale Group, Inc. Trucks may be shown with optional equipment and / or features not available in all regions.



[www.emechiale.in](http://www.emechiale.in)